

## Reduced Cooling Costs & Improved Comfort

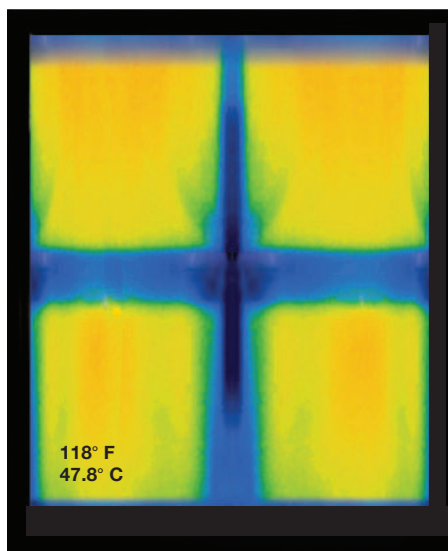
With the glare control and view-through benefits of dark fabrics

KOOLBLACK® Technology eliminates the trade-offs between aesthetics and performance by incorporating near-infrared, heat reflective properties into dark color screen fabrics. This feature, coupled with the other benefits of dark colored fabrics, provides excellent contrast for a clear view through, uniformed exterior building design, maximized energy savings and optimized occupant comfort.



Standard Dark Screen Fabrics

- high contrast for clear & sharp view through
- coordinated exterior building design
- exceptional glare control



E Screen™ with KOOLBLACK® Technology

- same great features as standard dark screen fabrics
- improved near-infrared reflectance of 64% in comparison to 3% for conventional charcoal/charcoal fabric
- excellent acoustic absorption with an NRC up to 0.45
- improved heat control and energy savings

## Total Screen Benefits

Only E Screen™ with KOOLBLACK® Technology can achieve all screen benefits

- increased IR reflectance = less re-radiated heat = lower cooling costs & enhanced occupant comfort
- superior view through and glare control
- coordinated exterior building design and aesthetics when incorporated with glazing



Sun Control Textiles™

More information on Mermet's full line of KOOLBLACK® Technology fabrics, E Screen™ with KOOLBLACK® Technology and T Screen with KOOLBLACK® Technology, can be found at [www.mermetusa.com](http://www.mermetusa.com).



# E Screen™

WITH KOOLBLACK™ TECHNOLOGY

High Performance | 1% 3% 5% openness

## Specifications

Item Number	1%: 007701   3%: 007703   5%: 007705	E Screen™ Original	1%: 007701   3%: 007703   5%: 007705
Product Category	High Performance	Conventional	
Fabric Style	Basketweave	Basketweave	
Openness Factor	1%, 3%, & 5%	1%, 3%, & 5%	
Composition	36% Fiberglass   64% Vinyl	36% Fiberglass   64% Vinyl	
UV Blockage	Approximately 95% - 99%	Approximately 95% - 99%	
Standard Packaging	Rolls of 30 ly (27 lm)	Rolls of 30 ly (27 lm)	
Width	98 in (250 cm), 122 in (310 cm)	78 in (200 cm), 98 in (250 cm), 122 in (310 cm)	
Weight	1%: 12.95 oz/yd² (439 g/m²) ±5% 3%: 11.3 oz/yd² (382 g/m²) ±5% 5%: 10.6 oz/yd² (358 g/m²) ±5%	1%: 13.3 oz/yd² (452 g/m²) ±5% 3%: 11.6 oz/yd² (393 g/m²) ±5% 5%: 10.7 oz/yd² (363 g/m²) ±5%	
Thickness	1%: 0.021 in (0.53 mm) ±5% 3%: 0.020 in (0.51 mm) ±5% 5%: 0.019 in (0.47 mm) ±5%	1%: 0.020 in (0.52 mm) ±5% 3%: 0.017 in (0.43 mm) ±5% 5%: 0.016 in (0.41 mm) ±5%	

## Classifications

Fire Classifications	NFPA 701-10 TM#1, California U.S. Title 19; CAN/ULC-S109-03 Small & Large Flame Test	NFPA 701-10 TM#1, California U.S. Title 19; CAN/ULC-S109-03 Small & Large Flame Test
Bacterial Resistance	ASTM E2180, ASTM G21	ASTM E2180, ASTM G21
Environment	RoHS - Lead Free, GREENGUARD Gold	RoHS - Lead Free, GREENGUARD Gold
Acoustic	1%: NRC 0.45, SAA: 0.46 3%: NRC 0.15, SAA: 0.17 5%: NRC 0.10, SAA: 0.12	1%: NRC 0.50, SAA: 0.50 3%: NRC 0.15, SAA: 0.17 5%: NRC 0.10, SAA: 0.12

## Fabrication

**Cutting:** Cold, Ultrasonic or Crush | **Welding:** Radio Frequency, High Frequency, Impulse, Hot Air or Wedge  
We recommend testing all cutting and welding methods prior to use to confirm they meet your individual fabric specifications.

## E Screen™ WITH KOOLBLACK™ TECHNOLOGY

ITEM	COLOR	Rs IR   %	Rs   %	As   %	Ts   %	Rv   %	Tv   %	SHGC % Improvement														
035035	Charcoal/Charcoal	64	61	60	35	34	33	53	49	49	12	17	18	9	10	10	2	6	6	18	16	16
00K122	Charcoal/Grey-Stone	63	60	58	38	38	36	50	46	45	12	16	19	17	19	18	3	7	9	24	24	21
035131	Charcoal/Grey	67	65	62	40	40	38	49	46	45	11	14	17	16	18	17	2	5	7	24	24	21
035032	Charcoal/Cocoa	64	61	57	36	35	32	52	48	49	12	17	19	11	12	11	2	6	7	21	16	16
035071	Charcoal/Apricot	62	58	59	39	38	37	47	44	42	14	18	21	19	22	19	3	6	9	24	21	18

## E Screen™ Original

ITEM	COLOR	Rs IR   %	Rs   %	As   %	Ts   %	Rv   %	Tv   %	SHGC % Improvement														
030030	Charcoal/Charcoal	3	5	6	4	5	6	95	91	90	1	4	4	4	5	5	1	4	4	13	13	13
00M122	Charcoal/Grey-Stone	11	13	11	11	13	12	87	80	79	2	7	9	11	13	12	2	6	9	18	18	18
030001	Charcoal/Grey	9	11	11	9	10	10	88	85	83	3	5	7	8	10	10	2	5	7	16	16	16
030061	Charcoal/Cocoa	5	7	6	5	7	6	93	89	87	2	4	7	5	7	6	2	3	7	16	13	13
030071	Charcoal/Apricot	13	18	15	13	18	15	86	75	78	1	7	7	14	18	16	1	7	6	18	18	18

## Warranty

5 Year Exterior & 10 Year Interior

## Care & Handling

Remove dust with vacuum cleaner or compressed air. Do not scrub. Do not use solvents or any abrasive substance which might damage the coating of the fabric. Clean with a sponge or a soft brush dipped in soapy water using mild detergent. Rinse with clean water. Leave the blind down until completely dry. You can also very gently rub the fabric with a clean white pencil eraser to remove small stains.

Mermet Corporation  
5970 N. Main Street ■ Cowpens, SC 29330  
Ph 1.866.902.9647 ■ [info@mermetusa.com](mailto:info@mermetusa.com)

[mermetusa.com](http://mermetusa.com)



Sun Control Textiles™

The fabric performance tests were conducted in accordance with ASTM E891 & ASTM E903-96: Total Solar Transmittance (Ts), Total Solar Reflectance (Rt), Solar Reflectance in Infrared (Rsi IR), Total Solar Absorbance (As), Visible Reflectance (Rv), and Visible Transmittance (Tv). Glass performance tests for Solar Heat Gain Coefficient (SHGC) were conducted using the Lawrence Berkeley National Laboratory Window 7.3 NFRC certified software. SHGC % improvement for commercial applications is based on a standard commercial glass makeup of Double Glazing 6 mm / 1/8" air / 6 mm with low E on surface #2. Results for SHGC were obtained using the center of glass. Acoustical performance was tested in accordance with ASTM C423-09a: NRC is Noise Reduction Coefficient, SAA is Sound Absorption Average. For residential SHGC data and the most up-to-date test results, performance specifications, and larger samples, contact the Mermet Technical Department: [www.mermetusa.com](http://www.mermetusa.com)



## Perfect Commercial Solution

A combination of E Screen™ with KOOLBLACK® Technology & E Screen™ Original

**where** Southern & Western Exposures  
**what** E Screen™ with KOOLBLACK® Technology  
**why** Improved Comfort & Energy Savings

**where** Northern & Eastern Exposures  
**what** E Screen™ Original  
**why** Value Offering & Seamless Coordination

The combination of E Screen™ with KOOLBLACK® Technology and E Screen™ Original, in coordinating colors, achieves a seamless exterior design appearance and cost savings solution for commercial applications.

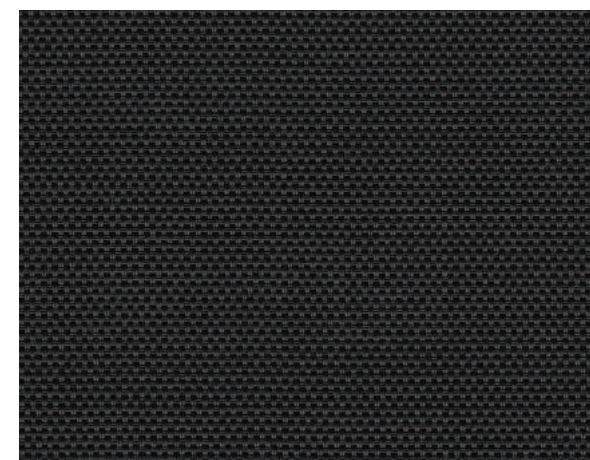
### Benefits of dark screens with KOOLBLACK® Technology

- excellent glare control
- crisp, clear view to the outside
- coordinated exterior building design
- reflects NIR solar energy
- improved comfort
- energy savings

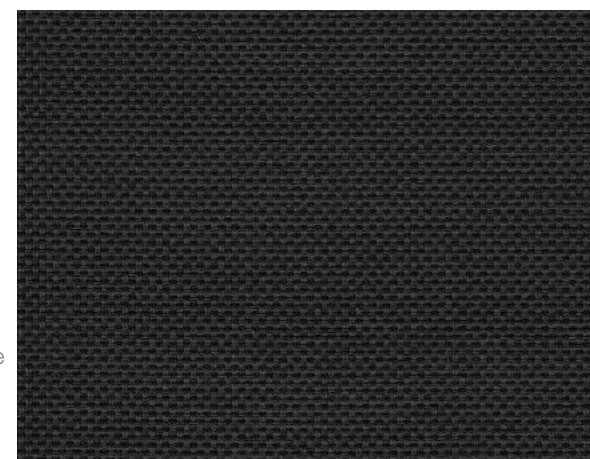


### Benefits of standard dark screen fabrics

- excellent glare control
- crisp, clear view to the outside
- coordinated exterior building design



1% 035035 | Charcoal/Charcoal



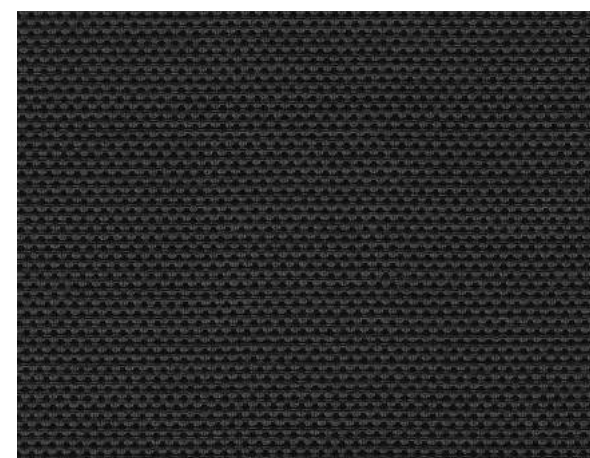
00K122  
Charcoal/  
Grey-Stone

3% 035035 | Charcoal/Charcoal

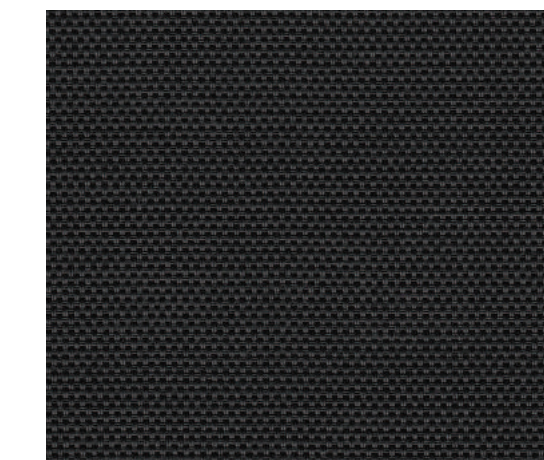
035131  
Charcoal/  
Grey

035032  
Charcoal/  
Cocoa

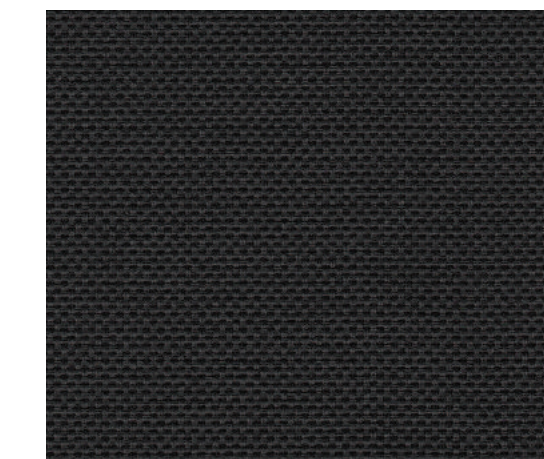
035071  
Charcoal/  
Apricot



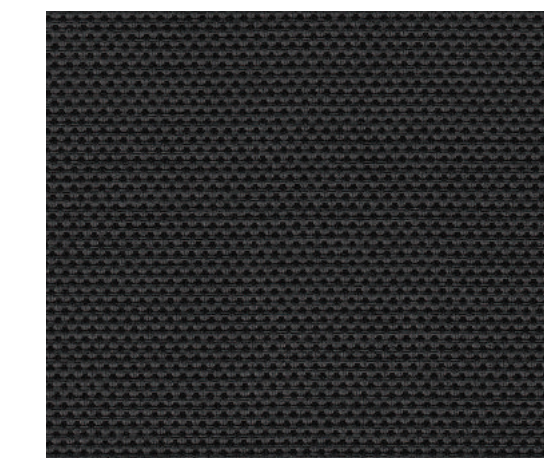
5% 035035 | Charcoal/Charcoal



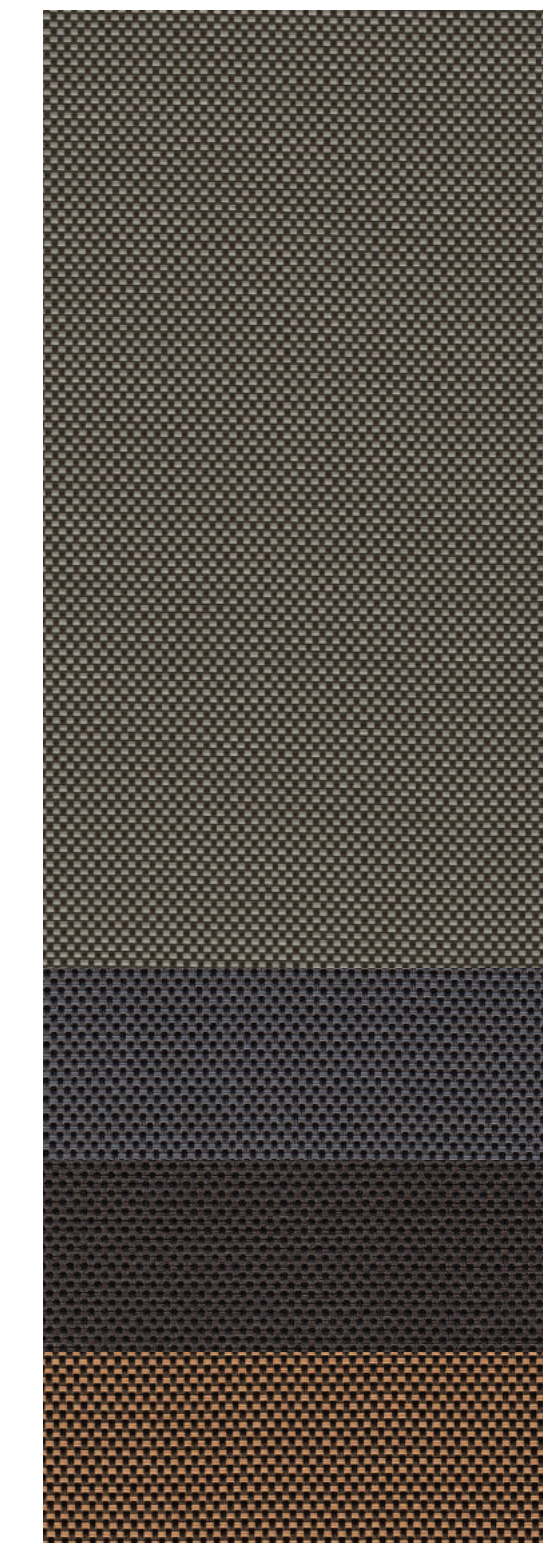
1% 030030 | Charcoal/Charcoal



3% 030030 | Charcoal/Charcoal



5% 030030 | Charcoal/Charcoal



00M122  
Charcoal/  
Grey-Stone

030001  
Charcoal/  
Grey

030061  
Charcoal/  
Cocoa

030071  
Charcoal/  
Apricot